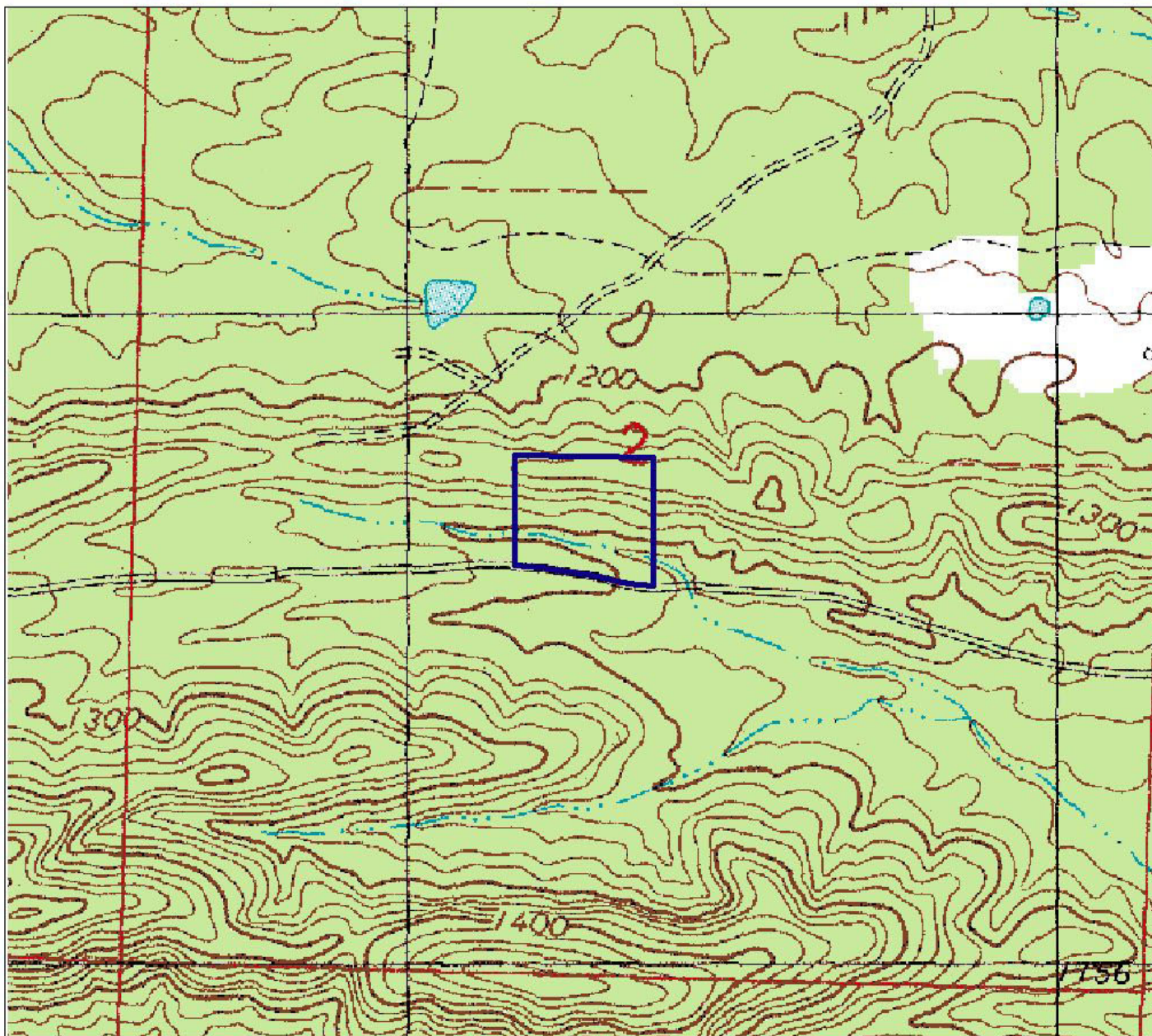


9/12/2006

Arkansas Natural Heritage Commission
Department of Arkansas Heritage
System of Natural Areas
Approximate Natural Area Boundaries



0.5 0 0.5 Miles

Fernwood Seep Natural Area

County: Polk Date Added To System: 2002 Acreage: 9.59

USGS Topographic Quadrangle: Bog Spring 7.5;
Township/Range: T05S/R32W Section(s): 02
Contour Interval: 20 feet

Directions: From Wickes travel north on U.S. Highway 71 approximately 3 miles to County Road 14. Turn left (west) on County Road 14 and travel 1 mile. The Natural Area is north of the road.

